



TURN YOUR ENGINE ON!

Your Automotive events in Florence

Hilton

W
WALDORF
ASTORIA
HOTELS & RESORTS

CONRAD
HOTELS & RESORTS™

canopy
BY HILTON

H
Hilton
HOTELS & RESORTS

CURIO
A COLLECTION BY HILTON™

DOUBLE TREE
BY HILTON™

TAPESTRY
COLLECTION
BY HILTON™

E
EMBASSY
SUITES
BY HILTON™

Hilton
Garden
Inn

Hampton
BY HILTON

tru
BY HILTON™

HOMWOOD
SUITES
BY HILTON™

HOME2
SUITES BY HILTON

H
Hilton
Grand Vacations

Hilton
HONORS

Hilton Florence Metropole

Hilton

LOCATION



A 15-floors building located in the business area of the city, only 4 km from Florence city center and the Santa Maria Novella railway station.

Only 3 km from the main highways exits and the International Airport of Florence “A. Vespucci”



“A.Vespucci” Airport: 3 Km
Santa Maria Novella Station: 4 km
Taxi: 15minutes

UNIQUE SELLING POINTS

Hilton



- ✓ 212 Rooms
- ✓ 4 Suites
- ✓ 1000 mq Ballroom
- ✓ 10 Hilton Meetings Rooms
- ✓ Relaxation area with Mega-Whirlpool, Swedish waterfall and chromotherapy
- ✓ Luci della Città Restaurant and Lounge Bar
- ✓ Complimentary Fitness Centre
- ✓ Parking facilities (open parking for up to 50 cars and covered parking for up to 80 cars on a payment basis)
- ✓ Hilton Shuttle Bus from/to City Centre on a payment basis
- ✓ Complimentary Business Centre
- ✓ Executive Lounge on 15th floor
- ✓ Possibility of privatizing the Hotel

ROOMS & SUITES



212 rooms

Standard: 158 (25 mq)
Executive: 32 (25 mq)

Deluxe: 18 (25 mq)
Junior Suite: 4 (50 mq)

Rooms amenities:

- Air-conditioning
- Telephone with dataport
- HDSL connection
- LCD-TV Standard network
- Electronic key
- Tea/Coffee making facilities
- Minibar
- Safe
- Hairdryer



F&B FACILITIES



Lounge Bar Area – ground floor

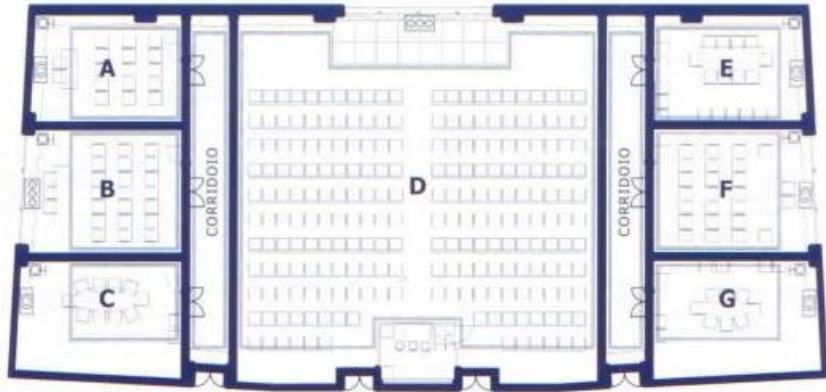
coffee breaks: 250 pax



Luci della Città – first floor

Tuscan and International traditional dishes
capacity: 120 people seated / served main hall
capacity: 80 seated / served adjacent room

CONGRESS CENTRE - FIRST FLOOR



500 mq height 5.20 m

Theater style: max 520 pax

Classroom style: max 300 pax

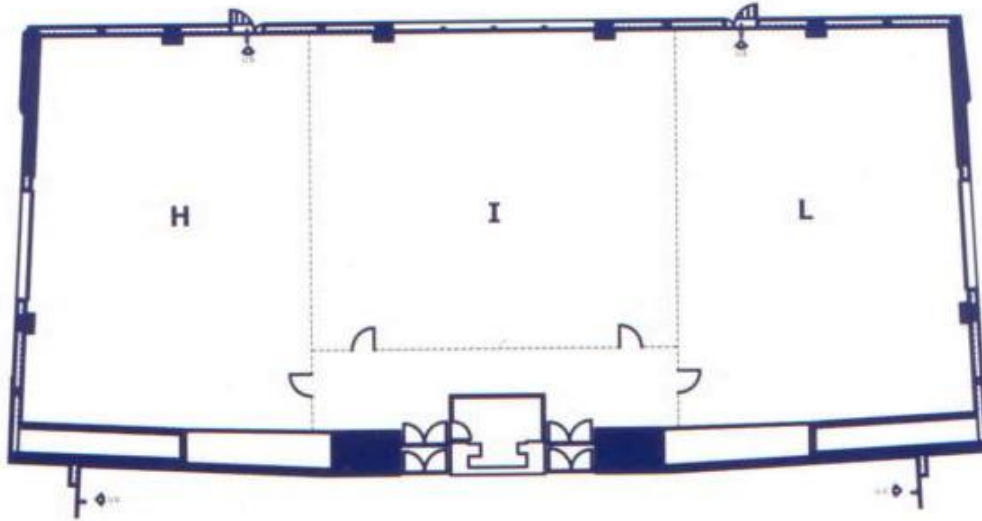
Cabaret style: max 170 pax



The Congress Centre offers two meeting rooms of 500 square meters each, both with natural light and that can accommodate from 5 to 500 delegates each.

The 2 rooms are divisible in other 10 rooms of different sizes, all fully soundproofed and air-conditioned, with separate entrances and the most advanced technological equipment.

CONGRESS CENTRE - GROUND FLOOR



500 m² height 3.80 m

Theater style: max 520 pax

Classroom style: max 300 pax

Cabaret style: max 120 pax



The ground floor room, with 3 sliding doors, has direct access to the hotel's private parking, facilitating the transport of heavy materials and lending itself well to exhibitions or launches of cars.

CARS IN HOTEL...

Hilton



PARKING & GARAGE



Hilton Florence Metropole has a free outdoor parking area that can accommodate up to 50 cars.

2 points of water exit for car washes



The hotel also offers the possibility of an underground garage for a fee, for a capacity of about 80 cars.

3 points of water exit for car washes

THE HEART OF CHIANTI...



The Chianti countryside offers to its visitors unique landscapes, with green hills, large vineyards, olive groves and small characteristic villages.

Surrounding spaces are ideal for drive tests and off-road crosses.



MUGELLO AREA: THE AUTODROMO



Among the most striking, modern and safe on the international scene

Place of Formula1 tests, it is ideal for testing and stringent tests drive

*The track can be hired every day
according to the following hours*

9.00-13.00 / 14.00-18.00

Services:

Track rental

Track services

Boxes if needed

Facilities (pressroom, briefing room, etc...)



MUGELLO: SOME NUMBERS...

- 5.245 meters of track
- 20 boxes (12 m x 12 m)
- 3 paddocks (26.000 mq plant area)
(7.000 mq medical centre area)
(6.500 mq tv compound area)
- 1 raised parking
- 1 square (15.000 mq extra track)
- Max 40 cars on track



Hilton Garden Inn Florence Novoli

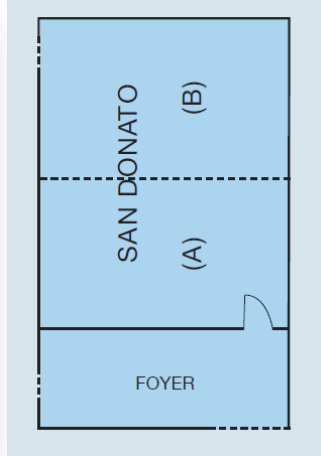
Hilton

OVERVIEW



- 121 rooms, all furnished in a warm contemporary design
- Covered Parking on a payment basis for up to 100 cars
- 10 minutes from the International Florence Airport and the main highways exits
- City Centre easily reachable with public transportation (10 minutes)
- Free Wi-Fi
- 1 meeting room for up to 150 delegates and 1 Boardroom for up to 15 delegates
- Complimentary Business Centre with remote printing facilities
- Complimentary Fitness Centre
- CITY Restaurant, Lounge Bar and *OpenGarden Terrace*, open during summer period
- Pavillion Pantry Shop open 24/7

CONGRESS CENTRE AND F&B FACILITIES



San Donato meeting room

(156 mq for up to 150 delegates – breakable into 2 sections)



CITY Restaurant

A delightful buffet lunch or a romantic dinner to savor special Tuscan and international dishes in an elegant atmosphere.

Opening hours: every day from 12.30 am till 3.00 pm and from 7.30 pm till 10.00 pm

CONTACTS

Hilton



VIA DEL CAVALLACCIO 36
50142 FLORENCE
TEL 055 7871 8036
FAX 055 7871 8020

EMAIL: florencemetropole_events@hilton.com



VIA SANDRO PERTINI 2/9
50127 FLORENCE
TEL 055 4240 2001
FAX 055 4240 2020

EMAIL: flrnv-salesadm@hilton.com

Director of Sales: Claudio Di Stefano
Director of Business Development: Cristina Salvadori
General Manager: Jean Tayar

We Are **HILTON**
We Are **HOSPITALITY**

Hilton

W
WALDORF
ASTORIA
HOTELS & RESORTS

CONRAD
HOTELS & RESORTS™

canopy
BY HILTON

Hilton
HOTELS & RESORTS

CURIO
A COLLECTION BY HILTON™

DOUBLETREE
BY HILTON™

TAPESTRY
COLLECTION
BY HILTON™

EMBASSY
SUITES
BY HILTON™

Hilton
Garden
Inn

Hampton
BY HILTON

tru
BY HILTON™

HOMEWOOD
SUITES
BY HILTON™

HOME2
SUITES BY HILTON™

Hilton
Grand Vacations

Hilton
HONORS